



Future  
Performance.  
Today.

# Our full range of industrial products.

Renata offers a wide range of primary and secondary micro batteries with high performance and reliability, taking advantage of 40+ years technology development and manufacturing expertise.

Industrial companies operate in many different business fields, such as Medical, Metering, POS and IoT, just to name a few of them. What do these companies all have in common? They all strive for their products to have the maximum reliability and the greatest-possible performance. Two big trends are involved with this: Miniaturization and Connectivity. Developers are facing new challenges with both of these trends. Applications are getting smaller and must be linked together. Often a wireless communication, such as WiFi, BLE, SigFox, NB-IoT and LoRa, is needed. These industrial products are requiring a tailored micro-battery solution to power the product.

## Swiss precision and expertise

In addition to a broad portfolio of standard batteries, we also develop individualized products with quality Swiss precision and our years of experience, precisely matching to your requirements.

## Our strengths

- High quality
- Excellence in service & manufacturing
- Flexible customized solutions



### Medical

- Capsule endoscopy
- Insulin pumps
- CGM (Continuous Glucose Monitoring)
- Drug delivery systems
- Thermometers
- Wearable sensors



### Industry

- Smart meters
- Remote controls
- POS systems
- Security systems
- Tracking devices



### Consumer Goods

- KeyFob
- Glucose meters
- Watches
- Calculators
- Consumer electronics



Visit our website [www.renata.com](http://www.renata.com) for further information.

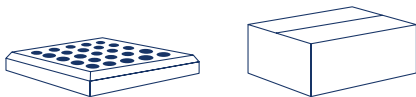
# 3V Lithium coin cells



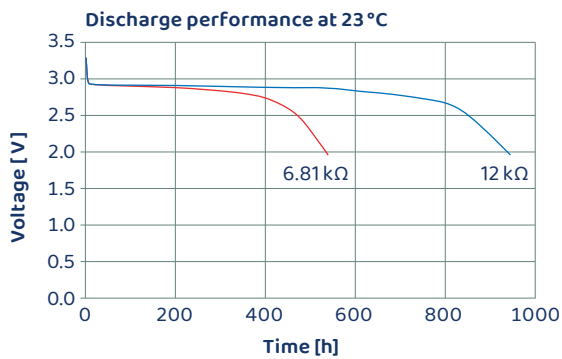
## Features

- Low self discharge
- Shelf life up to 10 years at 23 °C
- More than 1000 variations of tabbed cells available
- Custom tabbed models and assemblies possible
- Industrial bulk available
- UL certified: file MH 14002

## Industrial bulk



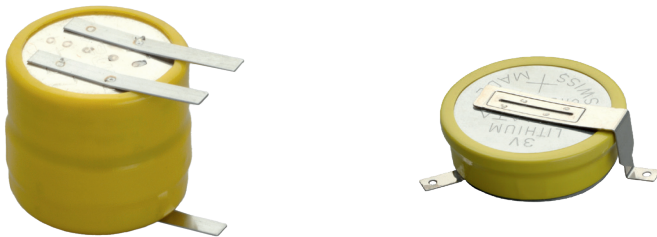
## Typical discharge curve



## Standard specifications

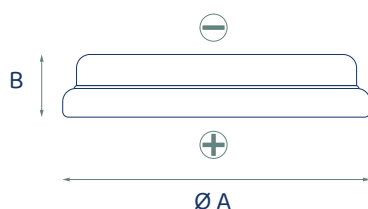
Chemical system	Li/MnO <sub>2</sub>
Nominal voltage	3V
Capacity range	25–950 mAh

## Customized solutions



Find details about our lithium coin cells on our website [www.renata.com](http://www.renata.com)

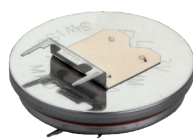
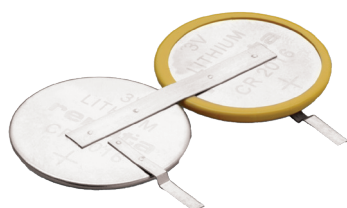
# 3V Lithium coin cells



## Dimensions and electrical characteristics

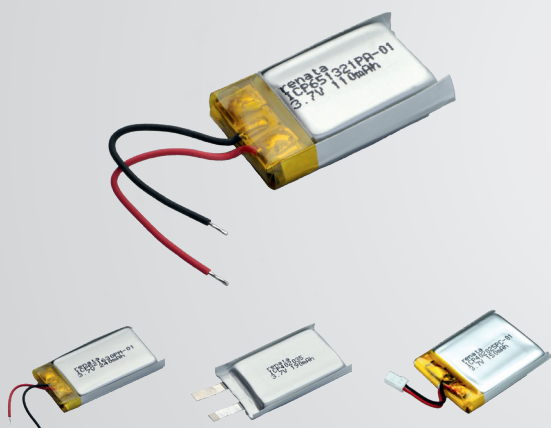
Renata part	Nominal voltage [V]	Capacity [mAh]	Operating temp. [°C]	Self discharge at 23 °C per year	Average weight [g]	Diameter [mm]	Height [mm]
CR1025	3	30	-40 / +85	<1%	0.6	10.0	2.5
CR1216 MFR	3	25	-30 / +85	<1%	0.7	12.5	1.6
CR1220 MFR	3	35	-30 / +85	<1%	0.8	12.5	2.0
CR1225	3	48	-40 / +85	<1%	0.9	12.5	2.5
CR1616	3	50	-40 / +85	<1%	1.1	16.0	1.6
CR1620	3	68	-40 / +85	<1%	1.2	16.0	2.0
CR1632	3	137	-40 / +85	<1%	1.8	16.0	3.2
CR2016 MFR	3	90	-30 / +85	<1%	1.7	20.0	1.6
CR2016.MFR-E	3	104	-30 / +70	<1.5%	1.7	20.0	1.6
CR2025 MFR	3	165	-30 / +85	<1%	2.5	20.0	2.5
CR2025.MFR-E	3	180	-30 / +70	<1.5%	2.5	20.0	2.5
CR2032 MFR	3	225	-30 / +85	<1%	2.8	20.0	3.2
CR2032.MFR-E	3	260	-30 / +70	<1.5%	2.8	20.0	3.2
CR2320	3	150	-40 / +85	<1%	2.7	23.0	2.0
CR2325	3	190	-40 / +85	<1%	3.0	23.0	2.0
CR2430	3	285	-40 / +85	<1%	4.1	24.5	3.0
CR2450N	3	540	-40 / +85	<1%	5.9	24.5	5.0
CR2450N-MFR	3	580	-40 / +85	<1%	5.9	24.5	5.0
CR2477N	3	950	-40 / +85	<1%	8.3	24.5	7.7

## Customized solutions



Find details about our lithium coin cells on our website [www.renata.com](http://www.renata.com)

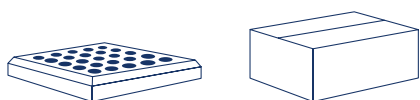
# 3.70 – 3.85 V Lithium polymer batteries



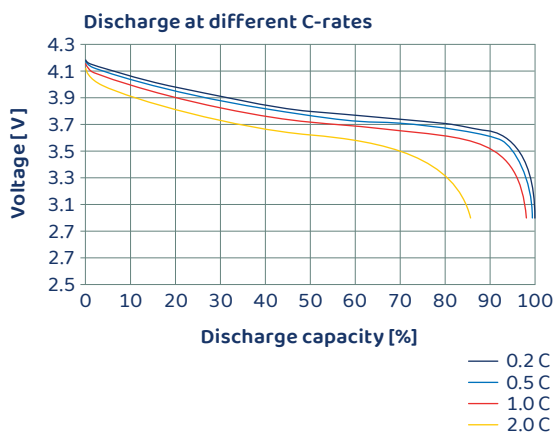
## Features

- Best in class quality
- High energy density with a low profile
- Cobalt-oxide electrode technology
- Customization possible
- UL certified: file MH 14002
- Long cycle life with good capacity retention
- Technical expertise and guidance
- Including battery protection circuit
- Many models IEC62133 certified (some also BIS and KR approved)

## Industrial bulk



## Typical discharge curve



## Standard specifications

Nominal voltage	3.70–3.85 V
Capacity range	22–2800 mAh (0.2 C cut-off 3.0 V at 20 °C)
Storage temperature	–20 °C / +45 °C (0 °C / +30 °C for storage > 3 months)

## Charging characteristics

Voltage	4.2–4.35 V
Current normal	0.5 C (Constant current)
Max. charging current	1.0 C (Constant current)
Temperature at charging	0 °C / +45 °C

## Discharge characteristics

Max. discharge current	2.0 C (Non-cont. current) 1.0 (Cont. current)
Temperature at discharging	–20 °C / +60 °C
Cycle life at room temperature	500 cycles with > 80 % of min. capacity

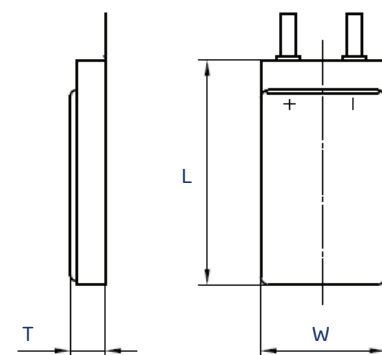
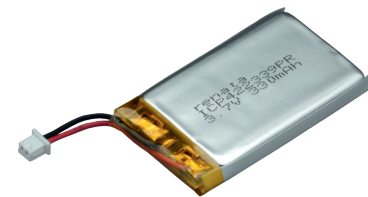
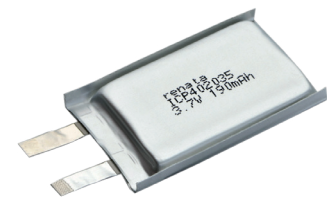


Find details about our lithium polymer batteries on our website [www.renata.com](http://www.renata.com)

# 3.70 – 3.85 V Lithium polymer batteries

## Dimensions and electrical characteristics

Renata part	Cell model	Dimensions [mm]*			Capacity [mAh]		Contact
		T	W	L	Min.	Typical	
100290	ICP241019	2.4	11.2	19.3	24	25	Tabs
100730	ICP341018PM	3.7	10.2	19.5	33	35	Wire
100735	ICP331319PM	3.75	12.6	20.3	45	50	Wire
101024	ICP281029HPG***	3.3	10.2	30.5	65	68	Tabs
101025	ICP390831PR	4.3	8.7	33.0	80	80	Wire
100640	ICP501022UPM	5.5	10.0	24.0	75	80	Wire
100694	ICP641414PE	6.8	14.9	16.8	85	95	Wire
100690	ICP501421PS	5.2	14.1	22.5	108	115	Wire
100696	ICP651321PA-01	7.0	13.2	23.5	110	120	Wire
100642	ICP401230UPR	4.5	12.7	31.0	125	130	Wire
100935	ICP521522PS**	5.7	15.5	23.5	125	130	Connector
100688	ICP501230PS-03	5.4	12.5	31.5	130	135	Wire
100692	ICP581323PA-01	6.2	13.2	25.0	140	145	Wire
100644	ICP402025PC-01	4.3	20.5	27.5	150	155	Connector
100695	ICP641620PA-01	6.9	16.2	21.5	155	165	Wire
100689	ICP501233PA-02	5.3	12.0	35.0	170	175	Wire
100645	ICP402035	4.4	20.0	35.0	190	195	Tab
101026	ICP401835TPRT**	4.4	18.2	37.0	205	215	Wire
100693	ICP621333PA-01	6.7	13.0	35.0	230	240	Wire
100691	ICP521630PM-01	5.7	17.0	31.5	240	250	Wire
101027	ICP621333HPMT***	6.8	13.0	35.0	260	270	Wire
101028	ICP403029PL-02	4.4	31.0	31.0	325	325	Wire
100648	ICP422339PR	4.6	23.7	40.5	330	340	Connector
101029	ICP582035PR-01	6.4	20.5	37.0	330	340	Wire
100697	ICP602823PA-01	6.4	28.2	25.5	335	350	Wire
100649	ICP402050PR	4.5	20.7	52.5	400	420	Wire
100650	ICP582930PR-01	6.2	29.5	32.0	430	450	Wire
100701	ICP303450PA-02	3.5	34.5	52.0	500	510	Wire
101030	ICP632136HPST***	6.95	21.5	39.5	500	520	Wire
101031	ICP682828HPMT***	7.5	28.0	30.0	530	560	Wire
100651	ICP622540PMT**	6.5	25.7	42.5	550	600	Wire
100652	ICP543759PMT**	5.95	37.5	61.0	1260	1320	Wire
100758	ICP606168PRT**	6.3	62.0	71.0	2700	2800	Wire



\* Dimensions after 500 cycles  
 \*\* NTC Temp Sensor built in  
 \*\*\* 3.85V model



Find details about our lithium polymer batteries on our website [www.renata.com](http://www.renata.com)

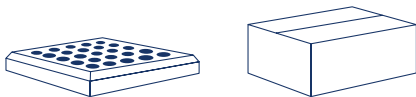
# 3.70 – 3.85 V Rechargeable coin cells



## Features

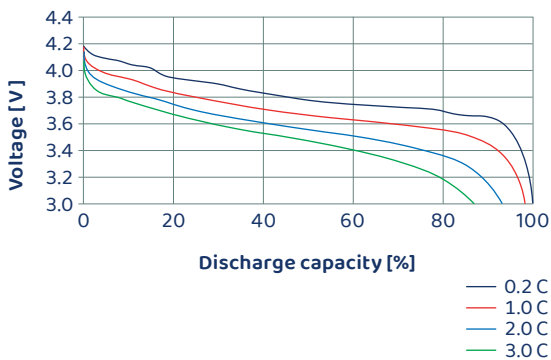
- Battery fully sealed – no leakage
- Safer versus pouch cells
- Fast charging up to 4.0 C, voltage system 4.2V–4.5V
- Typical cycle life >1000
- Highly robust against swelling, temperature and mechanical stress
- Leading Glass-to-Metal Seal for volume optimization (less dead volume)
- Longer storage – low self discharge < 2 % per month

## Industrial bulk



## Typical discharge curve

Discharge at different C-rates  
1054B Rate discharge profile



Charge: CC / CV: 2.0 C–4.2V (0.05 cut-off) at 25 °C  
Discharge: CC: Different C-Rate to 3.0V cut-off at 25 °C

## Standard specifications

Nominal voltage	3.70–3.85 V
Capacity range	31–104 mAh (0.5 C cut-off 3.0V at 20 °C)
Storage temperature	–20 °C / +45 °C (0 °C / +30 °C for storage > 3 months)

## Charging characteristics

Voltage	4.2–4.4V
Current normal	0.2 C (Constant current)
Max. charging current	2.0 / 4.0 C (Constant current)
Temperature at charging	0 °C / +45 °C

## Discharge characteristics

Max. discharge current	2.0 C (Non-cont. current) 1.0 (Cont. current)
Temperature at discharging	–20 °C / +60 °C
Cycle life at room temperature	500 cycles with > 80 % of min. capacity



Find details about our rechargeable coin cells on our website [www.renata.com](http://www.renata.com)



# 3.70 – 3.85 V Rechargeable coin cells

## Dimensions and electrical characteristics

Renata part	Diameter [mm]	Height [mm]	Nominal voltage [V]	Charging voltage [V]	Typical capacity [mAh] (@ 0.2 C)	Max. charge
ICR1040 B1*	10.2	4.3	3.7	4.2	33	2.0C
ICR1054 B1*	10.2	5.6	3.7	4.2	48	2.0C
ICR1240 B1*	12.2	4.3	3.7	4.2	50	2.0C
ICR1254 B1*	12.2	5.6	3.7	4.2	72	2.0C
ICR1454 B1	14.2	5.6	3.7	4.2	104	2.0C
ICR1254 B2	12.2	5.6	3.8	4.3	77	2.0C
ICR1154 B3*	11.2	5.6	3.82	4.35	70	2.0C
ICR1042 B4	10.2	4.2	3.85	4.4	38	2.0C
ICR1154 B4	11.2	5.6	3.85	4.4	64	2.0C
ICR1054 P4*	10.2	5.6	3.85	4.4	46	4.0C
ICR1054 D4	10.2	5.4	3.85	4.4	51	2.0C

\*under development



## Renata – the world class leader in micro batteries.

With the Glass-to-Metal sealing technology, Renata offers the next generation of rechargeable button cells with more volume for active material compared to conventional housing technologies. Our batteries are hermetically sealed and offer superior protection against leakage. The high mechanical stability without measurable swelling allows the design of precise high-end applications that were not possible with previous technologies. The electrical properties also benefit from the housing design and enable a longer service life and more cycles with higher charging currents.

The ideal rechargeable energy source for innovative Health Monitoring, IOT, Drug Delivery, Smart Watch, Smart Patch, Insulin Pen and many other portable applications. Renata offers customer-specific solutions for contacts (tabs), protection circuits and individual sizes. Talk to us about your business case.



Find details about our rechargeable coin cells on our website [www.renata.com](http://www.renata.com)

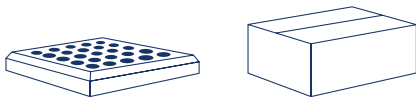
# 1.55 V Silver oxide coin cells



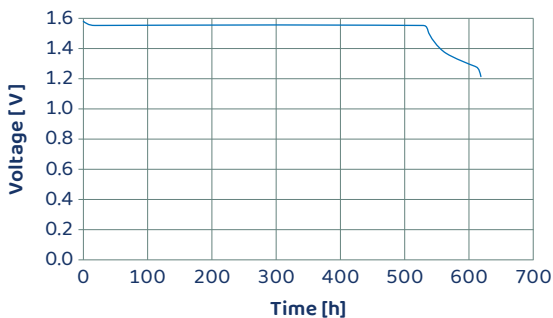
## Features

- Extremely small dimensions possible
- Custom tabbed models possible
- > 40 different standard models
- High pulse versions available with > 10 mA pulse capability
- Shelf life up to 3 years at 23 °C
- Low and high drain as well as high pulse versions available

## Industrial bulk



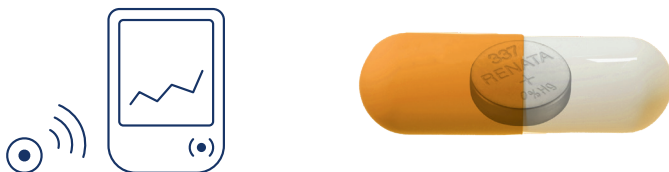
## Typical discharge curve



## Standard specifications

Chemical system	Ag <sub>2</sub> O	
Nominal voltage	1.55 V	
Capacity range	6–190 mAh	
Typical standard discharge current range	20–300 µA	
Average weight range	0.13–2.3 g	
Temperature range	Low drain: -10 °C / +60 °C	High drain: -20°C / +60 °C
Self discharge at 23 °C	Low drain: < 5 % / year	High drain: < 10 % / year

## Application example



Find details about our silver oxide coin cells on our website [www.renata.com](http://www.renata.com)

# 1.55 V Silver oxide coin cells

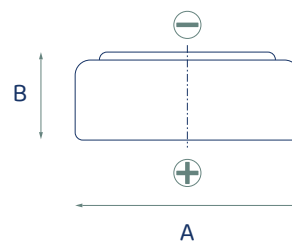
## Dimensions and electrical characteristics

### Low drain batteries

Renata part	Dimensions [mm]		Nominal capacity [mAh]
	A	B	
337	4.8	1.6	8
335	5.8	1.2	6
317	5.8	1.6	10.5
379	5.8	2.1	16
319	5.8	2.7	21
339	6.8	1.4	11
321	6.8	1.6	14.5
364	6.8	2.1	20
377	6.8	2.6	28
346	7.9	1.2	9.5
341	7.9	1.4	15
315	7.9	1.6	23
362	7.9	2.1	24
397	7.9	2.6	32
329	7.9	3.1	37
384	7.9	3.6	45
309	7.9	5.4	80
373	9.5	1.6	29
371	9.5	2.0	40
395	9.5	2.7	55
394	9.5	3.6	84
366	11.6	1.6	47
381	11.6	2.1	50
390	11.6	3.1	60
344	11.6	3.6	105
301	11.6	4.2	130
303	11.6	5.4	175

### High drain batteries

Renata part	Dimensions [mm]		Nominal capacity [mAh]
	A	B	
376	6.8	2.6	27
361	7.9	2.1	24
396	7.9	2.6	32
392	7.9	3.6	45
393	7.9	5.4	80
370	9.5	2.1	40
399	9.5	2.7	55
380	9.5	3.6	82
365	11.6	1.6	47
391	11.6	2.1	50
389	11.6	3.1	80
350	11.6	3.6	105
386	11.6	4.2	130
357	11.6	5.4	190

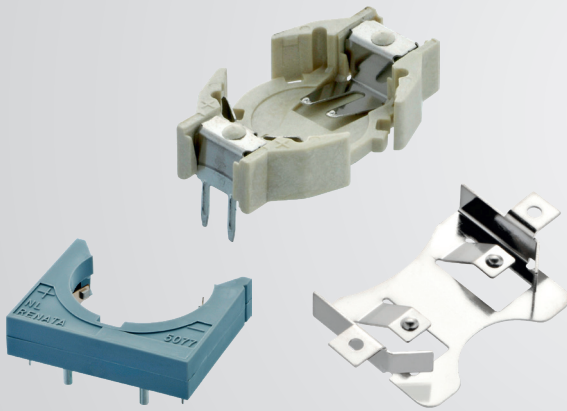


## Customized solutions



Find details about our silver oxide coin cells on our website [www.renata.com](http://www.renata.com)

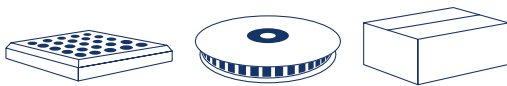
# Battery holders



## Features

- Low profile for compact PCBs
- Lightweight material with robust design
- Dual spring contacts for low resistance (SMTM & SMTU, HU)
- Designed for automatic «pick & place» mounting
- Save retention of coin cell
- Protection against short circuits, inverse polarity and leak currents
- Suitable models for reflow/wave or high temperature soldering
- Easy and fast replacement of battery

## Industrial bulk and tape & reel



## Standard specifications

Holder material	Heat resistant, glass fiber filled LCP, polyamide or nickel plated phosphor bronze
Flammability rating	UL 94 V-0 (Except SMTM)
Battery contacts	Spring stainless steel AISI 301, nickel plated throughout, Solder areas tin-plated, other options available
Contact resistance between contacts and the cell	Less than 100 mΩ (measured through AC 1kHz)

## Details about our battery holders on our website

Surface Mounting Metal (SMTM) – low profile

Surface Mounting Technology (SMTU)

Through-hole mounting (HU) – horizontal

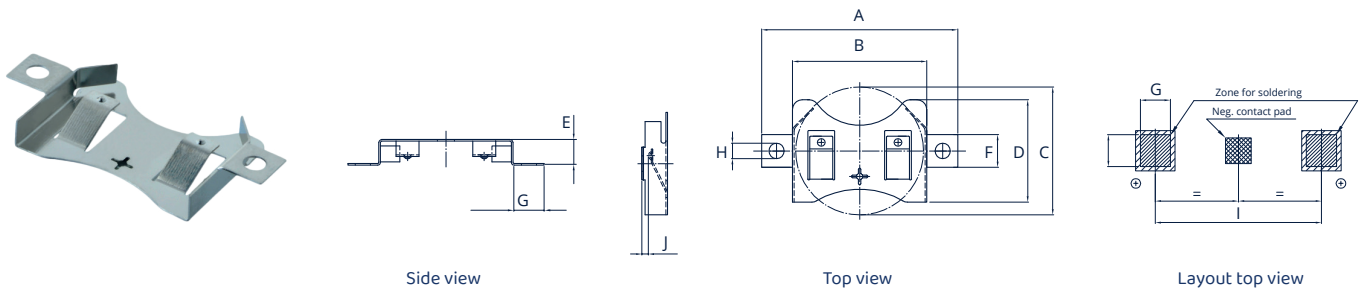
Through-hole mounting (VBH) – vertical

Through-hole mounting with positioning pins (NH/NL)



Find details about our battery holders on our website [www.renata.com](http://www.renata.com)

# Surface mounting metal



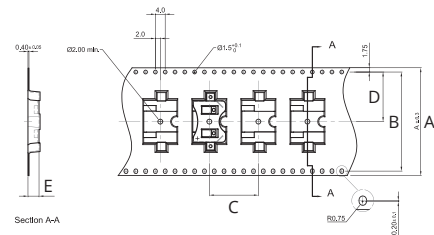
## Dimensions and weights

Battery holders: Surface mounting metal

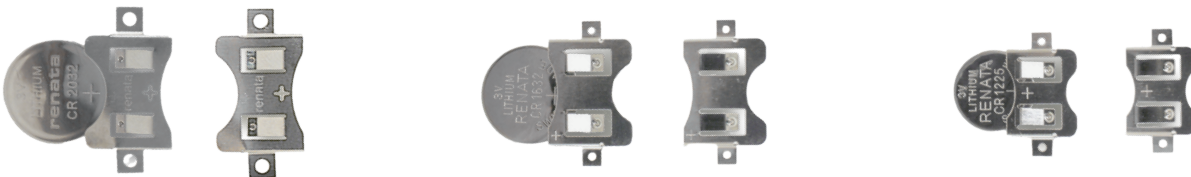
Renata part	Model	For use with Renata cell	Maximum dimensions [mm]										Weight [g]
			A	B	C	D	E	F	G	H	I	J	
100380	SMTM1225	CR1225	18.9	13.2	12.5	10.60	3.2	3.2	3.2	1.2	16.10	1.5	0.4
100390	SMTM1632	CR1632	23.2	16.9	16.0	13.25	4.0	3.2	3.0	1.2	20.05	1.0	0.7
100340	SMTM2032	CR2032	30.7	21.0	20.0	16.00	4.0	5.1	4.7	2.4	26.00	1.0	0.9

Tape and reel packaging

Renata part	Model	Quantity per reel	Maximum dimensions [mm]				
			A	B	C	D	E
100710	SMTM1225 TR	1000 pieces	32	28	16	14	3.8
100711	SMTM1632 TR	700 pieces	44	40	20	20	4.5
702100	SMTM2032 TR	600 pieces	44	40	24	20	4.5

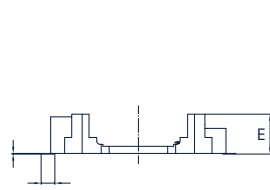
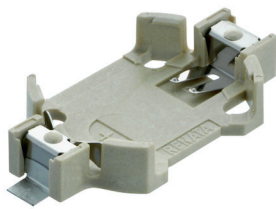


## Product Images

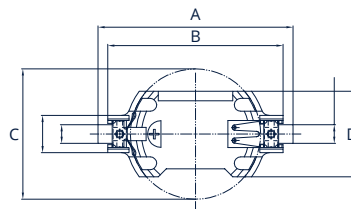


Find details about our battery holders on our website [www.renata.com](http://www.renata.com)

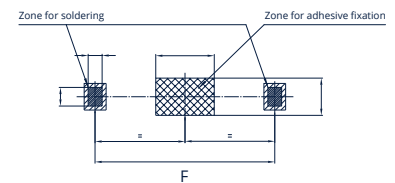
# Surface mounting technology



Side view



Top view



Layout top view

## Dimensions and weights

Battery holders: Surface mounting technology

Renata part*	Model	For use with Renata cell	Dimensions [mm]						Weight [g]
			A	B	C	D	E	F	
701132	SMTU357-LF	357	23.6	19.9	11.6	12.0	7.55	20.7	0.85
701114	SMTU1220-LF	CR1220	23.7	20.3	12.5	12.7	4.8	21.1	0.80
701115	SMTU1225-LF	CR1225	23.7	20.3	12.5	12.7	4.8	21.1	0.70
701130	SMTU1632-LF	CR1632	27.7	24.3	16.0	14.5	5.4	25.1	0.80
701116	SMTU2032-LF	CR2032	32.0	28.5	20.0	16.1	5.4	29.4	0.95
701117	SMTU2430-LF	CR2430	36.4	33.0	24.5	16.1	4.9	33.8	1.05
701118**	SMTU2450N-LF	CR2450N	36.7	33.0	24.5	16.1	7.5	33.8	1.45
701119	SMTU2477N-LF	CR2477N	36.7	33.0	24.5	16.1	10.3	33.8	1.65
701113	SM2X2016-LF	CR2016	32.0	28.5	20.0	16.1	5.4	29.4	0.95
702080	SMTU2032-G***	CR2032	32.0	28.5	20.0	16.1	5.4	29.4	0.95

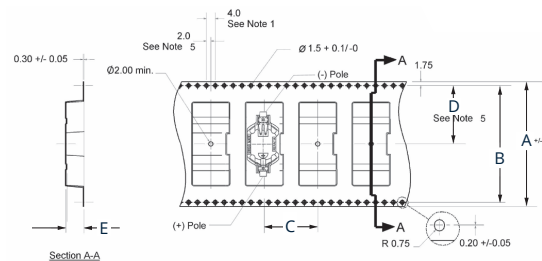
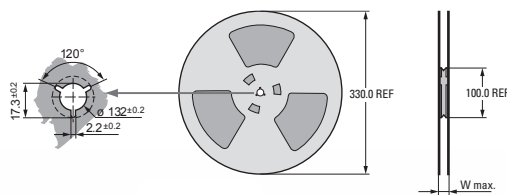
\* Industrial bulk packaging

\*\* Not suitable for CR2450HT

\*\*\* Gold plated contacts for increased conductivity (optional)

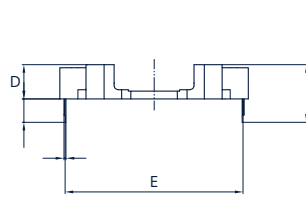
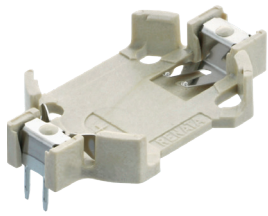
Tape and reel packaging

Renata part	Model	Quantity per reel	Dimensions [mm]				
			A	B	C	D	E
702450	SMTU1220-LF.TR	750 pieces	44	40.4	16	20.2	5.7
701230	SMTU1225-LF.TR	750 pieces	44	40.4	16	20.2	5.7
701231	SMTU1632-LF.TR	520 pieces	44	40.4	20	20.2	6.1
701232	SMTU2032-LF.TR	485 pieces	44	40.4	24	20.2	6.0
701233	SMTU2430-LF.TR	490 pieces	56	52.4	24	26.2	5.7
701234	SMTU2450N-LF.TR	350 pieces	56	52.4	24	26.2	8.2
701235	SMTU2477N-LF.TR	250 pieces	56	52.4	24	26.2	10.8
701236	SM2X2016-LF.TR	485 pieces	44	40.4	24	20.2	6.0

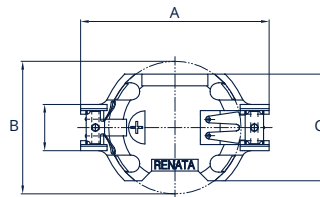


Find details about our battery holders on our website [www.renata.com](http://www.renata.com)

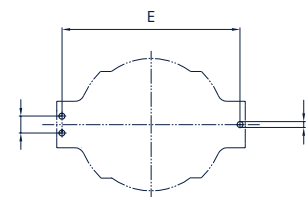
# Through-hole mounting



Side view



Top view



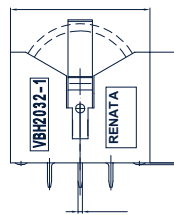
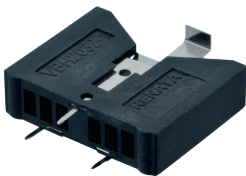
Layout top view

## Dimensions and weights

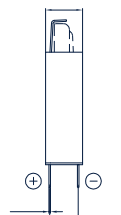
Battery holders: Through-hole mounting

Renata part	Model	For use with Renata cell	A	B	C	D	E	Weight [g]
357	HU357-LF	357	19.9	11.6	12.0	7.4	18.65	0.84
CR1225	HU1225-LF	CR1225	20.3	12.5	12.7	4.6	19.10	0.70
CR1632	HU1632-LF	CR1632	24.3	16.0	14.5	5.2	23.00	0.80
CR2032	HU2032-LF	CR2032	28.5	20.0	16.1	5.2	27.20	0.95
CR2430	HU2430-LF	CR2430	33.0	24.5	16.1	4.7	31.70	1.05
CR2450N	HU2450N-LF	CR2450N	33.0	24.5	16.1	7.3	31.75	1.45
CR2477N	HU2477N-LF	CR2477N	33.0	24.5	16.1	10.1	31.80	1.65
703384	VBH2032-1	CR2032	-	-	-	-	-	1.86
701111	NH5077-LF	CR2450, CR2477	-	-	-	-	-	2.40
701112	NL5077-LF	CR2450, CR2477	-	-	-	-	-	2.90

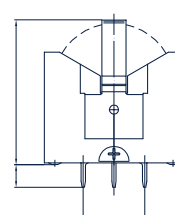
### VBH2032-1



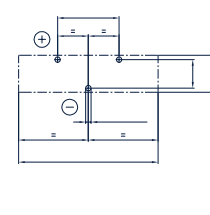
Front view from (-) pole side



Side view

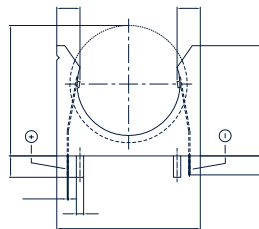


Front view from (+) pole side



Layout top view

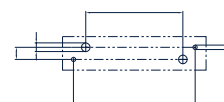
### NH5077-LF



Front view

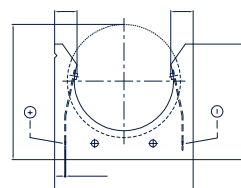


Side view

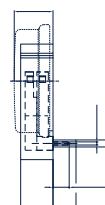


Layout top view

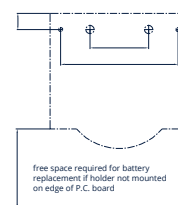
### NL5077-LF



Front view



Side view







Layout top view

free space required for battery replacement if holder not mounted on edge of P.C. board



Find details about our battery holders on our website [www.renata.com](http://www.renata.com)

# Scope of supply

Batteries for watches hearing aids and calculators				
Chemical system	Dimensions [mm]	Renata No.	I.E.C. Code	Capacity [mAh]
Silver oxide (low drain) 1.55 V 				<b>0% MERCURY</b>
	4.8 × 1.6	337	SR416SW	8
	5.8 × 1.2	335	SR512SW	6
	5.8 × 1.6	317	SR516SW	10.5
	5.8 × 2.1	379	SR521SW	16
	5.8 × 2.7	319	SR527SW	21
	6.8 × 1.4	339	SR614SW	11
	6.8 × 1.6	321	SR616SW	14.5
	6.8 × 2.1	364	SR621SW	20
	6.8 × 2.6	377	SR626SW	28
	7.9 × 1.2	346	SR712SW	9.5
	7.9 × 1.4	341	SR714SW	15
	7.9 × 1.6	315	SR716SW	23
	7.9 × 2.1	362	SR721SW	24
	7.9 × 2.6	397	SR726SW	32
	7.9 × 3.1	329	SR731SW	37
	7.9 × 3.6	384	SR41SW	45
	7.9 × 5.4	309	SR754SW	80
	9.5 × 1.6	373	SR916SW	29
	9.5 × 2.0	371	SR920SW	40
	9.5 × 2.7	395	SR927SW	55
	9.5 × 3.6	394	SR936SW	84
	11.6 × 1.6	366	SR1116SW	47
	11.6 × 2.0	381	SR1120SW	50
	11.6 × 3.0	390	SR1130SW	60
	11.6 × 3.6	344	SR1136SW	105
	11.6 × 4.2	301	SR43SW	130
	11.6 × 5.4	303	SR44SW	175
Silver oxide (high drain) 1.55 V 				<b>0% MERCURY</b>
	6.8 × 2.6	376	SR626W	27
	7.9 × 2.1	361	SR721W	24
	7.9 × 2.6	396	SR726W	32
	7.9 × 3.6	392	SR41W	45
	7.9 × 5.4	393	SR754W	80
	9.5 × 2.0	370	SR920W	40
	9.5 × 2.7	399	SR927W	55
	9.5 × 3.6	380	SR936W	82
	11.6 × 1.6	365	SR1116W	47
	11.6 × 2.0	391	SR1120W	50
	11.6 × 3.0	389	SR1130W	80
	11.6 × 3.6	350		105
	11.6 × 4.2	386	SR43W	130
	11.6 × 5.4	357	SR44W	190
	Lithium 3 V 	10.0 × 2.5	CR1025	
12.5 × 1.6		CR1216		25
12.5 × 2.0		CR1220		35
12.5 × 2.5		CR1225		48
16.0 × 1.6		CR1616		50
16.0 × 2.0		CR1620		68
16.0 × 3.2		CR1632		137
20.0 × 1.6		CR2016		90
20.0 × 2.5		CR2025		165
20.0 × 3.2		CR2032		225
23.0 × 2.0		CR2320		150
23.0 × 2.5		CR2325		190
24.5 × 3.0		CR2430		285
24.5 × 5.0		CR2450N		540
24.5 × 7.7	CR2477N		950	
Zinc air, 1.45 V 				<b>0% MERCURY</b>
	5.8 × 3.6	10	PR70	105
	7.9 × 3.6	312	PR41	165
	7.9 × 5.4	13	PR48	305
	11.6 × 5.4	675	PR44	660

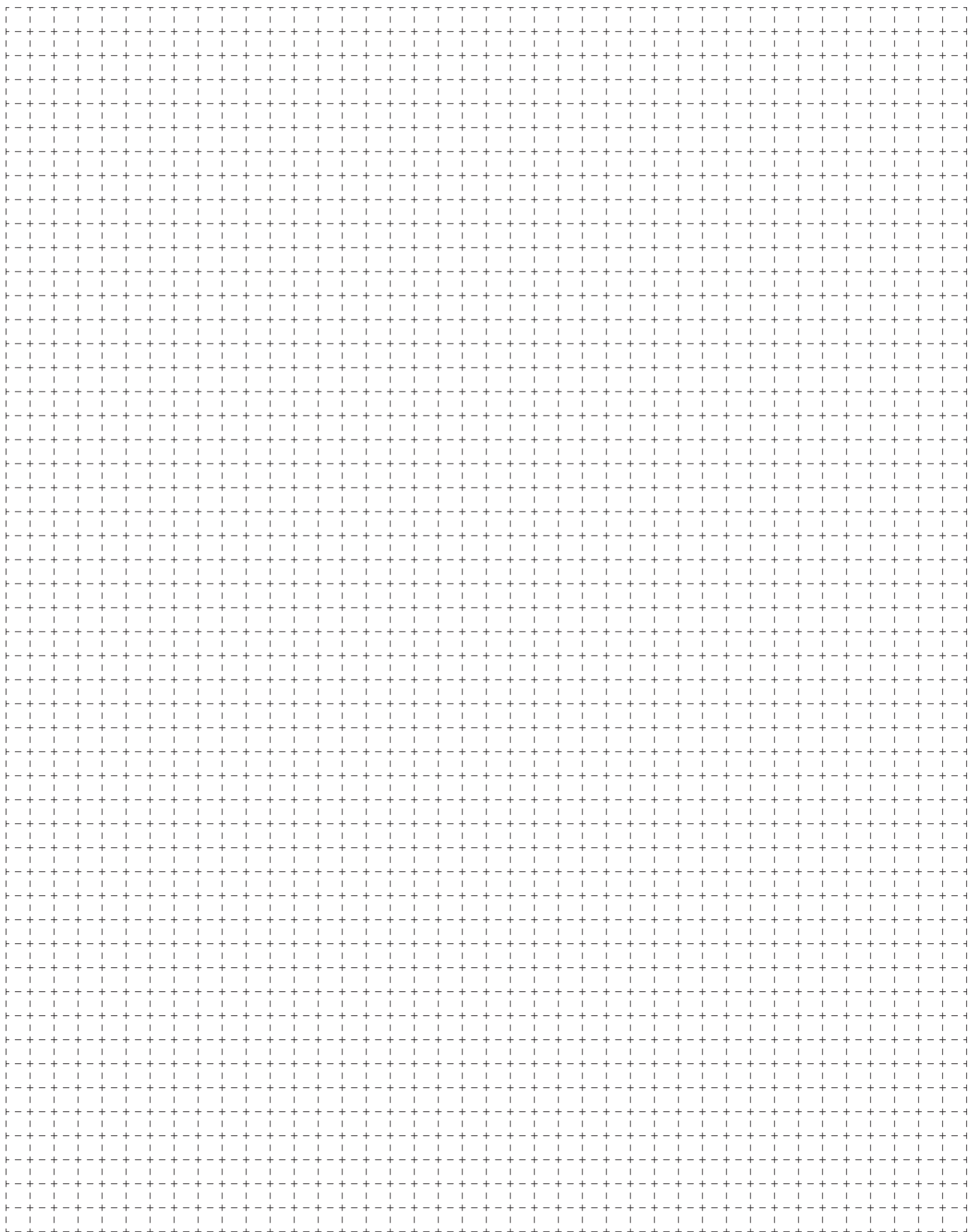


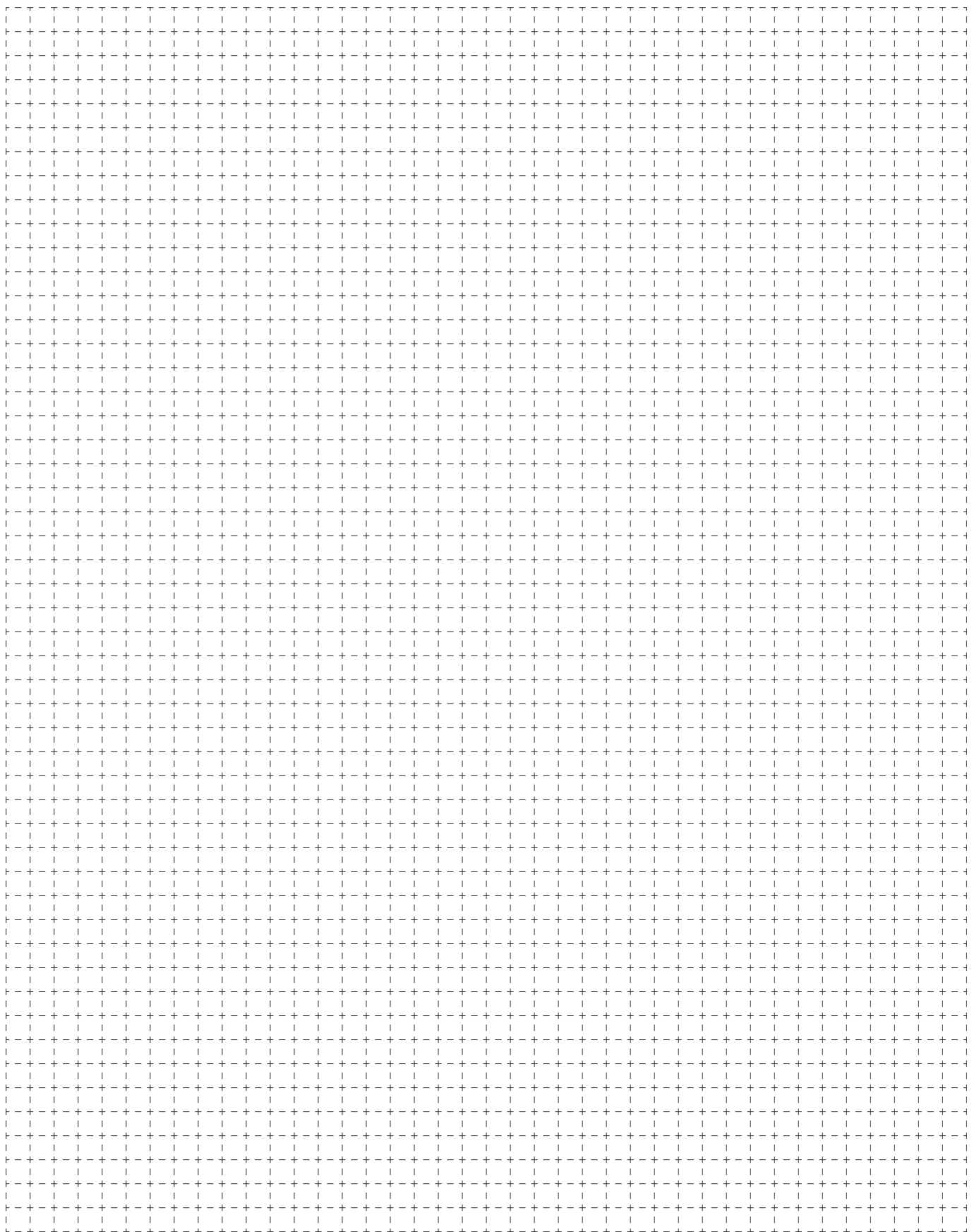
# Cross reference guide

Renata part	Energizer, Eveready	Maxell, Panasonic, Sony, Toshiba	Varta	Rayovac	Duracell	Timex	Citizen	Seiko	I.E.C. 60086-3 (60086-2)
301	301	SR43SW	V301	301	D 301/386	D	280-01	SB-A8	SR1142 (SR43)
303	303	SR44SW	V303	303	D 303/357	A	280-08	SB-A9	SR1154 (SR44)
309	309	SR754SW	V309	309	D 309/393				SR754 (SR48)
315	315	SR716SW	V315	315		HA	280-56	SB-AT	SR716 (SR67)
317	317	SR516SW	V317	317		CA	280-58	SB-AR	SR516 (SR62)
319	319	SR527SW	V319	319	D 319		280-60	SB-AE/DE	SR527 (SR64)
321	321	SR616SW	V321	321		DA	280-73	SB-AF/DF	SR616 (SR65)
329	329	SR731SW	V329	329					SR731
335	335	SR512SW	V335	335			280-68	SB-AB	SR512
337	337	SR416SW		337					SR416
339	339	SR614SW	V339						SR614
341	341	SR714SW	V341	341					SR714
344	344	SR1136SW	V344	344					SR1136 (SR42)
346	346	SR712SW	V346	346			280-66	SB-DH	SR712
350	350		V350						SR1136 (SR42)
357	357	SR44W	V357	357	D 303/357	J	280-62	SB-B9	SR1154 (SR44)
361	361	SR721W	V361	361	D 361/362	X	280-53	SB-BK/EK	SR721 (SR58)
362	362	SR721SW	V362	362	D 361/362	S	280-29	SB-AK/DK	SR721 (SR58)
364	364	SR621SW	V364	364	D 364	T	280-34	SB-AG/DG	SR621 (SR60)
365	365	SR1116W							SR1116
366	366	SR1116SW	V366	366			280-46		SR1116
370	370	SR920W	V370	370	D 370/371	Z	280-51	SB-BN	SR921 (SR69)
371	371	SR920SW	V371	371	D 370/371		280-31	SB-AN	SR921 (SR69)
373	373	SR916SW	V373	373		WA	280-45	SB-AJ/DJ	SR916 (SR68)
376	376	SR626W		376	D 376		MA		SR626 (SR66)
377	377	SR626SW	V377	377	D 377	BA	280-39	SB-AW	SR626 (SR66)
379	379	SR521SW	V379	379	D 379	JA	280-59	SB-AC/DC	SR521 (SR63)
380		SR936W							SR936
381	381	SR1120SW	V381	381	D 381/391		280-27	SB-AS/DS	SR1121 (SR55)
384	384	SR41SW	V384	384	D 384/392		280-18	SB-A1/D1	SR736 (SR41)
386	386	SR43W	V386	386	D 301/386	H	280-41	SB-B8	SR1142 (SR43)
389	389	SR1130W	V389	389	D 389/390	M	280-15	SB-BU	SR1130 (SR54)
390	390	SR1130SW	V390	390	D 389/390		280-24	SB-AU	SR1130 (SR54)
391	391	SR1120W	V391	391	D 381/391	L	280-30	SB-BS/ES	SR1121 (SR55)
392	392	SR41W	V392	392	D 384/392	K	280-13	SB-B1	SR736 (SR41)
393	393	SR754W	V393	393	D 309/393	F		SB-B3	SR754 (SR48)
394	394	SR936SW	V394	394	D 394		280-17	SB-A4	SR936
395	395	SR927SW	V395	395	D 395/399	LA	280-48	SB-AP/DP	SR927 (SR57)
396	396	SR726W	V396	396	D 396/397	V	280-52	SB-BL	SR726 (SR59)
397	397	SR726SW	V397	397	D 396/397	N	280-28	SB-AL	SR726 (SR59)
399	399	SR927W	V399	399	D 395/399	W	280-44	SB-BP/EP	SR927 (SR57)
LR44	A76	LR44	V13GA	RW82	LR44	KA	280-904	SB-F9	LR1154 (LR44)
CR1025	CR1025	CR1025							CR1025
CR1216	CR/BR1216	CR/BR1216	CR1216	BR1216					CR1216
CR1220	CR1220	CR/BR1220	CR1220	CR1220	DL1220	PA		SB-T13	CR1220
CR1225	CR/BR1225	BR1225		BR1225					CR1225
CR1616	CR/BR1616	CR/BR1616	CR1616	BR1616	DL1616	YA	280-209		CR1616
CR1620	CR1620	CR1620	CR1620	CR1620	DL1620	EA	280-208		CR1620
CR1632		CR1632							CR1632
CR2016	CR/BR2016	CR/BR2016	CR2016	CR/BR2016	DL2016	FA	280-202/4/6	SB-T11	CR/BR2016
CR2025	CR2025	CR2025	CR2025	CR2025	DL2025	NA	280-205	SB-T14	CR2025
CR2032	CR/BR2032	CR/BR2032	CR2032	CR2032	DL2032			SB-T15	CR2032
CR2320	BR2320	CR/BR2320	CR2320	BR2320			280-201		CR/BR2320
CR2325	BR2325	BR2325		BR2325				SB-T12	CR2325
CR2430	CR2430	CR2430	CR2430	CR2430	DL2430				CR2430
CR2450N	CR2450	CR2450	CR2450		DL2450				CR2450
CR2477N	CR2477	CR2477			DL2477				CR2477

Renata	Rayovac	Duracell Activair	Energizer	Energizer Amplifier	Power One	Panasonic	Toshiba	I.E.C.
10	10A	DA 10	AC230E/EZ	AC230	P10	PR230H	ZA10	PR70
312	312A	DA 312	AC312E/EZ	AC312	P312	PR312H	ZA312	PR41
13	13A	DA 13	AC13E/EZ	AC13	P13	PR13H	ZA13	PR48
675	675A	DA 675	AC675E/EZ	AC675	P675	PR675H	ZA675	PR44

# Notes







# Renata – the world-class leader in coin cells.

Renata is a leading manufacturer and supplier of coin cells for medical devices, disposable medical sensors, watches and many electronic product areas. The company offers a broad portfolio of silver oxide, lithium and zinc-air batteries.

It also conducts the entire production process of batteries: from punching the battery housings, through the injection molded plastic seals, sourcing of raw materials, mixing the compounds of the cathode and anode material until the final assembly and quality control.

The offering focuses on the differentiation between high-drain and low-drain cells, vital to meet the high technical demands of the watch sector, among many other applications.

## **Please contact:**

**Renata SA**  
Kreuzenstrasse 30  
CH-4452 Itingen, Switzerland  
+41 61 975 75 75  
sales@renata.com



Renata SA, Kreuzenstrasse 30, CH-4452 Itingen, Switzerland  
+41 61 975 75 75 | sales@renata.com | www.renata.com

A COMPANY OF THE  **SWATCH GROUP**